



HIE InContext App v2.41.0 – Release Notes

Our latest version of the HIE InContext app (**v.2.41.0**) has been deployed to test. See the testing guide below for details. All screenshots of the application in these notes display fictional patient data.

Target Production Date for this Release – **11/13/23**

Items included in the release		Affected HIE(s)
New Features	PMPi - Meaningful error messages displayed	CRISP MD

Testing Guide

Please take a few moments to make sure that the app is launching as expected in your non-prod environment.

- Launch to **testincontext.crisphealth.org** OR access the **Clinical Information** tile of the staging HIE portal.

Test Patients

First	Last	DOB	Gender
Anna	Cadence	11/16/1981	Female
Gilbert	Grape	1/1/1984	Male

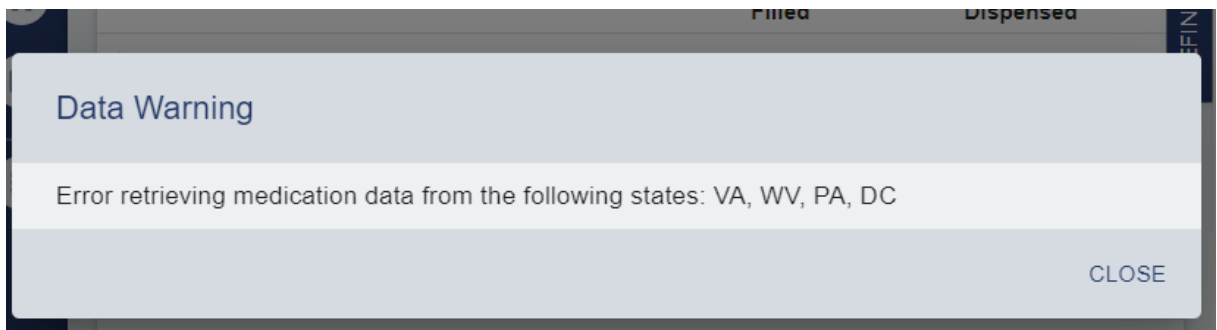
PMPi - Meaningful error messages displayed

Affected HIEs: CRISP MD

Prior to this release: Users would receive a pop-up message that gave a broad error message without specifying the cause or information causing said pop-up.

After this release: The verbiage used in the pop-up will outline the reasons behind the error message so the user may alter their commands.

Previous Interface:



New Interface:

